

Cap/taLand



One
Pearl
Bank

Tropical Hygge

(pronounced 'hoo-ga')

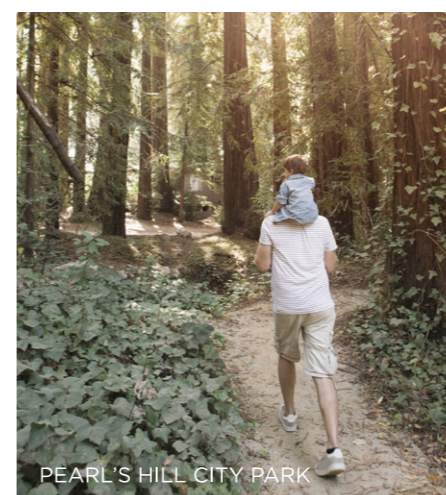
Welcoming spaces where one's cares simply melt away. A home where Hygge unlocks the comfort and calm of the living spaces within to help you live well.



THERE ARE PLACES WE SEEK.



THAT MAKE US FEEL WHOLE AGAIN.



PLACES OF RESPITE, REGENERATION AND RENEWAL.



THIS IS THE PLACE THAT PROVIDES.

This is where Hygge
Comes home in the tropics.



WORLD'S FIRST SKY ALLOTMENT GARDENS



Put down roots where we
Plant a community.

For even inside, you can move in with zero stress,
because Renovation Zero *Makes room for everything.*

RENO-ZERO CONCEPT

Fitted with tastefully designed fixtures and fittings for ease of rental and moving-in

WFH - FRIENDLY

Enjoy the freedom of space with a work corner or study area under one roof

FLEXIBLE LAYOUT

Multi-functional fixtures and versatile spaces that cater to diverse uses





One
Pearl
Bank

Open yourself to new views and
New Experiences.



LEGEND:

- Central Business District
- Medical Hub
- Arts & Cultural District
- Downtown Line
- Circle Line
- North East Line
- East West Line
- North South Line
- Thomson-East Coast Line
- Work
- F&B
- Retail
- Leisure & Entertainment



One Pearl Bank

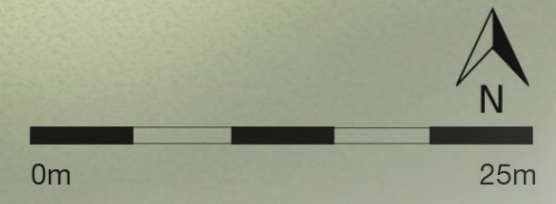
Pearl's Hill City Park

Walk from Pearl's Hill City Park to Fort Canning Park

500 m

Legend:

- A** Pedestrian Access Gate
- B** Eco-pond
- C** Access to Basement 2
- D** Outdoor Pavilions
- E** Swimming Pool
- F** Aqua Gym
- G** Hydromassage Pool
- H** In-Pool Lounge Chairs
- I** BBQ Area
- J** Kids' Pool
- K** Kids' Play Lawn
- L** Function Room
- M** Labyrinth Trail
- N** Exercise Corner
- O** Access to Park
- P** Playground
- Q** Pets Park
- R** Drop-off
- S** Allotment Garden (at every 4 floors)
- T** Service Area (Ground Floor) – Genset
- T1** Service Area (Basement 1) – Bin Center – Electrical Substation



PRIVÉ TERRACE L14

- A Water Feature
- B Outdoor Lounge
- C Yoga Deck
- D Exercise Lawn
- E Meditation Corner

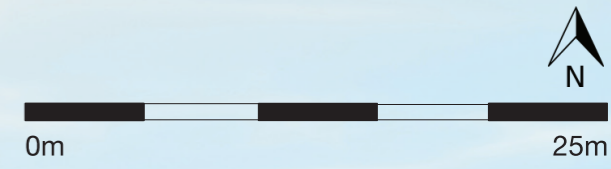
SOCIAL TERRACE L18

- F Outdoor Lounge
- G Alfresco Dining
- H Open Amphitheatre
- I Entertainment Area
- J Changing Room



CITY

PARK



SKY OCULUS (L39)

Outdoor Spaces

- A Alfresco Dining Area
- B Skybridge
- C Lawn Area
- D Garden Lounge
- E Walking Track
- F Outdoor Gym Area
- G Outdoor Lounge Area

Indoor Spaces

- H Changing Room
- I Gym
- J Washroom
- K Function Room
- L Gourmet Kitchen
- M Social Lounge



UNIT DISTRIBUTION

Legend

Type A – STUDIO
Type B – 1 BEDROOM
Type C – 2 BEDROOM
Type D – 3 BEDROOM
Type E – 4 BEDROOM
Type F – PENTHOUSE

Storey/ Unit No.	1	2	3	4	5	6	7	8	9	10	11
39	SKY OCULUS										
38	F4			F3							
37	D1-c	A1-b (m)	A1-b	C1-c	C1-c (m)	C2-c	D2-c	D3-c	B1-b	B2-b	C3-c
36	D1-b	A1-b (m)	A1-b	C1-b	C1-b (m)	C2-b	D2-b	D3-b	B1-b	B2-b	C3-b
35	D1-a	A1-a (m)	A1-a	C1-a	C1-a (m)	C2-a	D2-a	D3-a	B1-a	B2-a	C3-a
34	D1-b	A1-b (m)	A1-b	C1-b	C1-b (m)	C2-b	D2-b	D3-b	B1-b	B2-b	C3-b
33	D1-c	A1-b (m)	A1-b	C1-c	C1-c (m)	C2-c	D2-c	D3-c	B1-b	B2-b	C3-c
32	D1-b	A1-b (m)	A1-b	C1-b	C1-b (m)	C2-b	D2-b	D3-b	B1-b	B2-b	C3-b
31	D1-a	A1-a (m)	A1-a	C1-a	C1-a (m)	C2-a	D2-a	D3-a	B1-a	B2-a	C3-a
30	D1-b	A1-b (m)	A1-b	C1-b	C1-b (m)	C2-b	D2-b	D3-b	B1-b	B2-b	C3-b
29	D1-c	A1-b (m)	A1-b	C1-c	C1-c (m)	C2-c	D2-c	D3-c	B1-b	B2-b	C3-c
28	D1-b	A1-b (m)	A1-b	C1-b	C1-b (m)	C2-b	D2-b	D3-b	B1-b	B2-b	C3-b
27	D1-a	A1-a (m)	A1-a	C1-a	C1-a (m)	C2-a	D2-a	D3-a	B1-a	B2-a	C3-a
26	D1-b	A1-b (m)	A1-b	C1-b	C1-b (m)	C2-b	D2-b	D3-b	B1-b	B2-b	C3-b
25	D1-c	A1-b (m)	A1-b	C1-c	C1-c (m)	C2-c	D2-c	D3-c	B1-b	B2-b	C3-c
24	D1-b	A1-b (m)	A1-b	C1-b	C1-b (m)	C2-b	D2-b	D3-b	B1-b	B2-b	C3-b
23	D1-a	A1-a (m)	A1-a	C1-a	C1-a (m)	C2-a	D2-a	D3-a	B1-a	B2-a	C3-a
22	D1-b	A1-b (m)	A1-b	C1-b	C1-b (m)	C2-b	D2-b	D3-b	B1-b	B2-b	C3-b
21	D1-c	A1-b (m)	A1-b	C1-c	C1-c (m)	C2-c	D2-c	D3-c	B1-b	B2-b	C3-c
20	D1-b	A1-b (m)	A1-b	C1-b	C1-b (m)	C2-b	D2-b	D3-b	B1-b	B2-b	C3-b
19	D1-a	A1-a (m)	A1-a	C1-a	C1-a (m)	C2-a	D2-a	D3-a	B1-a	B2-a	C3-a
18	SOCIAL TERRACE										
17	D1-b	A1-b (m)	A1-b	C1-b	C1-b (m)	C2-b	D2-b	D3-b	B1-b	B2-b	C3-b
16	D1-c	A1-b (m)	A1-b	C1-c	C1-c (m)	C2-c	D2-c	D3-c	B1-b	B2-b	C3-c
15	D1-b	A1-b (m)	A1-b	C1-b	C1-b (m)	C2-b	D2-b	D3-b	B1-b	B2-b	C3-b
14	D1-a	A1-a (m)	A1-a	C1-a	C1-a (m)	C2-a	D2-a	D3-a	B1-a	B2-a	C3-a
13	D1-b	A1-b (m)	A1-b	C1-b	C1-b (m)	C2-b	D2-b	D3-b	B1-b	B2-b	C3-b
12	D1-c	A1-b (m)	A1-b	C1-c	C1-c (m)	C2-c	D2-c	D3-c	B1-b	B2-b	C3-c
11	D1-b	A1-b (m)	A1-b	C1-b	C1-b (m)	C2-b	D2-b	D3-b	B1-b	B2-b	C3-b
10	D1-a	A1-a (m)	A1-a	C1-a	C1-a (m)	C2-a	D2-a	D3-a	B1-a	B2-a	C3-a
9	D1-b	A1-b (m)	A1-b	C1-b	C1-b (m)	C2-b	D2-b	D3-b	B1-b	B2-b	C3-b
8	D1-c	A1-b (m)	A1-b	C1-c	C1-c (m)	C2-c	D2-c	D3-c	B1-b	B2-b	C3-c
7	D1-b	A1-b (m)	A1-b	C1-b	C1-b (m)	C2-b	D2-b	D3-b	B1-b	B2-b	C3-b
6	D1-a	A1-a (m)	A1-a	C1-a	C1-a (m)	C2-a	D2-a	D3-a	B1-a	B2-a	C3-a
5	D1-b	A1-b (m)	A1-b	C1-b	C1-b (m)	C2-b	D2-b	D3-b	B1-b	B2-b	C3-b
4	D1-c	A1-b (m)	A1-b	C1-c	C1-c (m)	C2-c	D2-c	D3-c	B1-b	B2-b	C3-c
3	D1-b	A1-b (m)	A1-b	C1-b	C1-b (m)	C2-b	D2-b	D3-b	B1-b	B2-b	C3-b
2	D1-a	A1-a (m)	A1-a	C1-a	C1-a (m)	C2-a	D2-a	D3-a	B1-a	B2-a	C3-a

Storey/ Unit No.	12	13	14	15	16	17	18	19	20	21	22
39	SKY OCULUS										
38	F2			F1							
37	D1-c	A1-b (m)	A1-b	C1-c	C1-c (m)	B4-b	E1-c	C4-c	B1-b	B3-b	C3-c
36	D1-b	A1-b (m)	A1-b	C1-b	C1-b (m)	B4-b	E1-b	C4-b	B1-b	B3-b	C3-b
35	D1-a	A1-a (m)	A1-a	C1-a	C1-a (m)	B4-a	E1-a	C4-a	B1-a	B3-a	C3-a
34	D1-b	A1-b (m)	A1-b	C1-b	C1-b (m)	B4-b	E1-b	C4-b	B1-b	B3-b	C3-b
33	D1-c	A1-b (m)	A1-b	C1-c	C1-c (m)	B4-b	E1-c	C4-c	B1-b	B3-b	C3-c
32	D1-b	A1-b (m)	A1-b	C1-b	C1-b (m)	B4-b	E1-b	C4-b	B1-b	B3-b	C3-b
31	D1-a	A1-a (m)	A1-a	C1-a	C1-a (m)	B4-a	E1-a	C4-a	B1-a	B3-a	C3-a
30	D1-b	A1-b (m)	A1-b	C1-b	C1-b (m)	B4-b	E1-b	C4-b	B1-b	B3-b	C3-b
29	D1-c	A1-b (m)	A1-b	C1-c	C1-c (m)	B4-b	E1-c	C4-c	B1-b	B3-b	C3-c
28	D1-b	A1-b (m)	A1-b	C1-b	C1-b (m)	B4-b	E1-b	C4-b	B1-b	B3-b	C3-b
27	D1-a	A1-a (m)	A1-a	C1-a	C1-a (m)	B4-a	E1-a	C4-a	B1-a	B3-a	C3-a
26	D1-b	A1-b (m)	A1-b	C1-b	C1-b (m)	B4-b	E1-b	C4-b	B1-b	B3-b	C3-b
25	D1-c	A1-b (m)	A1-b	C1-c	C1-c (m)	B4-b	E1-c	C4-c	B1-b	B3-b	C3-c
24	D1-b	A1-b (m)	A1-b	C1-b	C1-b (m)	B4-b	E1-b	C4-b	B1-b	B3-b	C3-b
23	D1-a	A1-a (m)	A1-a	C1-a	C1-a (m)	B4-a	E1-a	C4-a	B1-a	B3-a	C3-a
22	D1-b	A1-b (m)	A1-b	C1-b	C1-b (m)	B4-b	E1-b	C4-b	B1-b	B3-b	C3-b
21	D1-c	A1-b (m)	A1-b	C1-c	C1-c (m)	B4-b	E1-c	C4-c	B1-b	B3-b	C3-c
20	D1-b	A1-b (m)	A1-b	C1-b	C1-b (m)	B4-b	E1-b	C4-b	B1-b	B3-b	C3-b
19	D1-a	A1-a (m)	A1-a	C1-a	C1-a (m)	B4-a	E1-a	C4-a	B1-a	B3-a	C3-a
18	D1-b	A1-b (m)	A1-b	C1-b	C1-b (m)	B4-b	E1-b	C4-b	B1-b	B3-b	C3-b
17	D1-c	A1-b (m)	A1-b	C1-c	C1-c (m)	B4-b	E1-c	C4-c	B1-b	B3-b	C3-c
16	D1-b	A1-b (m)	A1-b	C1-b	C1-b (m)	B4-b	E1-b	C4-b	B1-b	B3-b	C3-b
15	D1-a	A1-a (m)	A1-a	C1-a	C1-a (m)	B4-a	E1-a	C4-a	B1-a	B3-a	C3-a
14	PRIVÉ TERRACE										
13	D1-b	A1-b (m)	A1-b	C1-b	C1-b (m)	B4-b	E1-b	C4-b	B1-b	B3-b	C3-b
12	D1-c	A1-b (m)	A1-b	C1-c	C1-c (m)	B4-b	E1-c	C4-c	B1-b	B3-b	C3-c
11	D1-b	A1-b (m)	A1-b	C1-b	C1-b (m)	B4-b	E1-b	C4-b	B1-b	B3-b	C3-b
10	D1-a	A1-a (m)	A1-a	C1-a	C1-a (m)	B4-a	E1-a	C4-a	B1-a	B3-a	C3-a
9	D1-b	A1-b (m)	A1-b	C1-b	C1-b (m)	B4-b	E1-b	C4-b	B1-b	B3-b	C3-b
8	D1-c	A1-b (m)	A1-b	C1-c	C1-c (m)	B4-b	E1-c	C4-c	B1-b	B3-b	C3-c
7	D1-b	A1-b (m)	A1-b	C1-b	C1-b (m)	B4-b	E1-b	C4-b	B1-b	B3-b	C3-b
6	D1-a	A1-a (m)	A1-a	C1-a	C1-a (m)	B4-a	E1-a	C4-a	B1-a	B3-a	C3-a
5	D1-b	A1-b (m)	A1-b	C1-b	C1-b (m)	B4-b	E1-b	C4-b	B1-b	B3-b	C3-b
4	D1-c	A1-b (m)	A1-b	C1-c	C1-c (m)	B4-b	E1-c	C4-c	B1-b	B3-b	C3-c
3	D1-b	A1-b (m)	A1-b	C1-b	C1-b (m)	B4-b	E1-b	C4-b	B1-b	B3-b	C3-b
2	D1-a	A1-a (m)	A1-a	C1-a	C1-a (m)	B4-a	E1-a	C4-a	B1-a	B3-a	C3-a



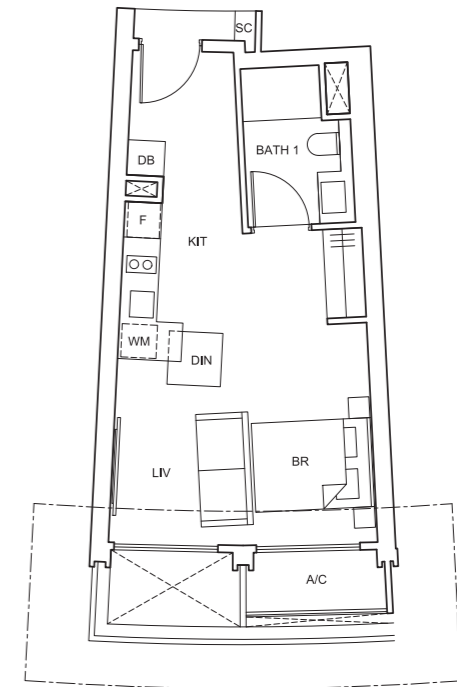
One Pearl Bank

FLOOR PLANS

TYPE A1-a
40 sq m / 431 sq ft

#02-03; #06-03; #10-03; #14-03; #19-03;
#23-03; #27-03; #31-03; #35-03;

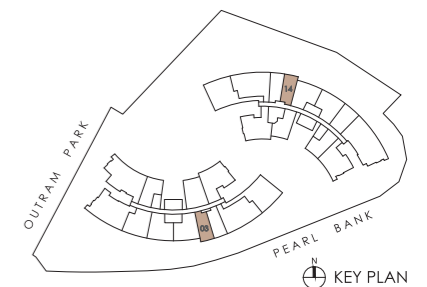
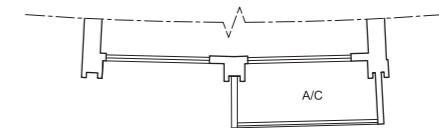
#02-14; #06-14; #10-14; #15-14; #19-14;
#23-14; #27-14; #31-14; #35-14



TYPE A1-b
40 sq m / 431 sq ft

#03-03; #04-03; #05-03; #07-03; #08-03;
#09-03; #11-03; #12-03; #13-03; #15-03;
#16-03; #17-03; #20-03; #21-03; #22-03;
#24-03; #25-03; #26-03; #28-03; #29-03;
#30-03; #32-03; #33-03; #34-03; #36-03;
#37-03;

#03-14; #04-14; #05-14; #07-14; #08-14;
#09-14; #11-14; #12-14; #13-14; #16-14;
#17-14; #18-14; #20-14; #21-14; #22-14;
#24-14; #25-14; #26-14; #28-14; #29-14;
#30-14; #32-14; #33-14; #34-14; #36-14;
#37-14



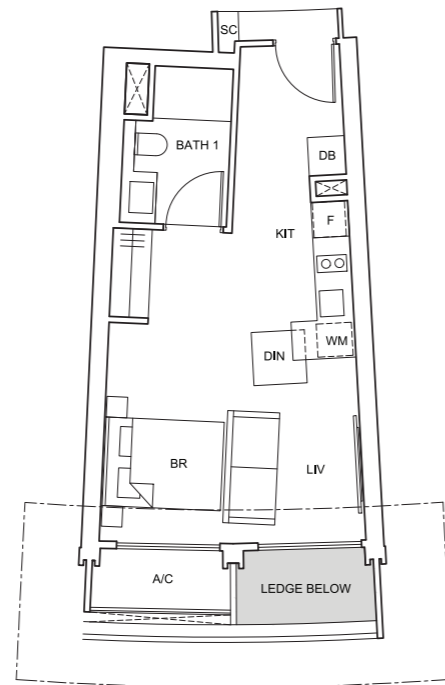
All floor areas indicated are inclusive of AC ledge, planters and balcony where applicable. The plans are subject to change as may be approved by the relevant authorities. All floor plans are approximate measurements only and subject to government re-survey. The balcony shall not be enclosed unless with the approved balcony screen. The installation and cost of the balcony screen shall be borne by the purchaser. For an illustration of the approved balcony screen, please refer to the diagram annexed hereto as "Annexure".

STUDIO

TYPE A1-a (m)
40 sq m / 431 sq ft

#02-02; #06-02; #10-02; #14-02; #19-02;
#23-02; #27-02; #31-02; #35-02;

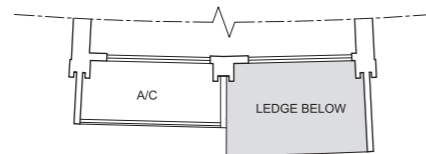
#02-13; #06-13; #10-13; #15-13; #19-13;
#23-13; #27-13; #31-13; #35-13



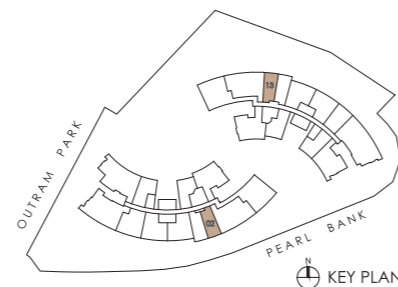
TYPE A1-b (m)
40 sq m / 431 sq ft

#03-02; #04-02; #05-02; #07-02; #08-02;
#09-02; #11-02; #12-02; #13-02; #15-02;
#16-02; #17-02; #20-02; #21-02; #22-02;
#24-02; #25-02; #26-02; #28-02; #29-02;
#30-02; #32-02; #33-02; #34-02; #36-02;
#37-02;

#03-13; #04-13; #05-13; #07-13; #08-13;
#09-13; #11-13; #12-13; #13-13; #16-13;
#17-13; #18-13; #20-13; #21-13; #22-13;
#24-13; #25-13; #26-13; #28-13; #29-13;
#30-13; #32-13; #33-13; #34-13; #36-13;
#37-13



All floor areas indicated are inclusive of AC ledge, planters and balcony where applicable. The plans are subject to change as may be approved by the relevant authorities. All floor plans are approximate measurements only and subject to government re-survey. The balcony shall not be enclosed unless with the approved balcony screen. The installation and cost of the balcony screen shall be borne by the purchaser. For an illustration of the approved balcony screen, please refer to the diagram annexed hereto as "Annexure".

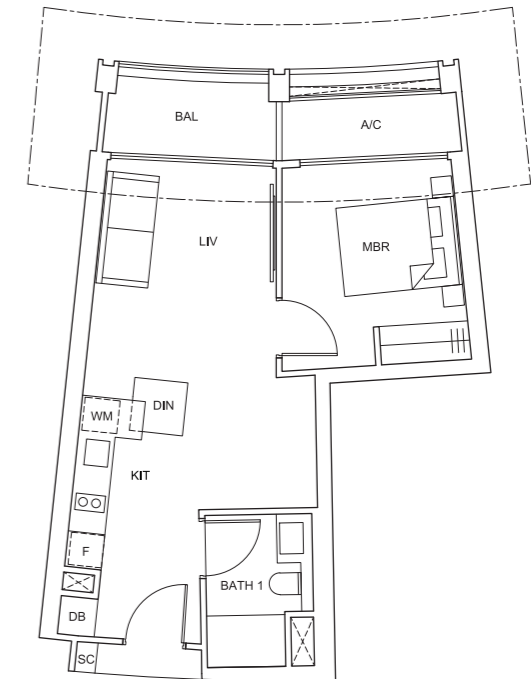


1-BEDROOM

TYPE B1-a
53 sq m / 570 sq ft

#02-09; #06-09; #10-09; #14-09; #19-09;
#23-09; #27-09; #31-09; #35-09;

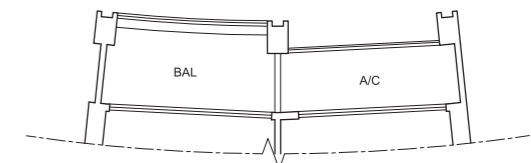
#02-20; #06-20; #10-20; #15-20; #19-20;
#23-20; #27-20; #31-20; #35-20



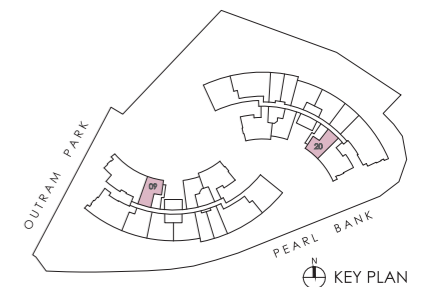
TYPE B1-b
53 sq m / 570 sq ft

#03-09; #04-09; #05-09; #07-09; #08-09;
#09-09; #11-09; #12-09; #13-09; #15-09;
#16-09; #17-09; #20-09; #21-09; #22-09;
#24-09; #25-09; #26-09; #28-09; #29-09;
#30-09; #32-09; #33-09; #34-09; #36-09;
#37-09;

#03-20; #04-20; #05-20; #07-20; #08-20;
#09-20; #11-20; #12-20; #13-20; #16-20;
#17-20; #18-20; #20-20; #21-20; #22-20;
#24-20; #25-20; #26-20; #28-20; #29-20;
#30-20; #32-20; #33-20; #34-20; #36-20;
#37-20



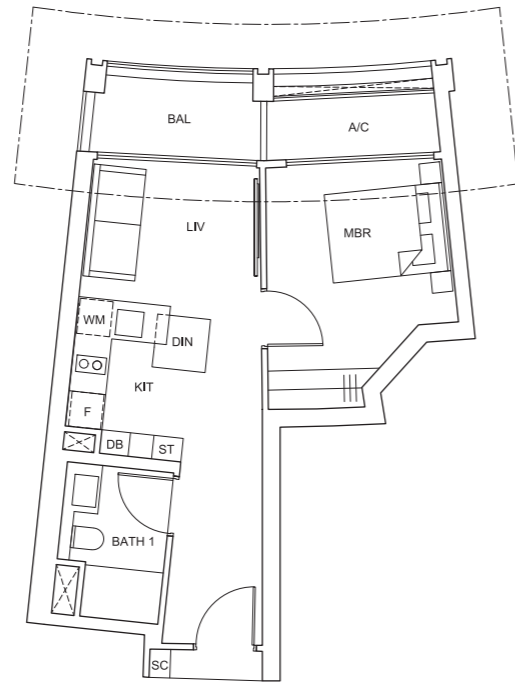
All floor areas indicated are inclusive of AC ledge, planters and balcony where applicable. The plans are subject to change as may be approved by the relevant authorities. All floor plans are approximate measurements only and subject to government re-survey. The balcony shall not be enclosed unless with the approved balcony screen. The installation and cost of the balcony screen shall be borne by the purchaser. For an illustration of the approved balcony screen, please refer to the diagram annexed hereto as "Annexure".



1-BEDROOM

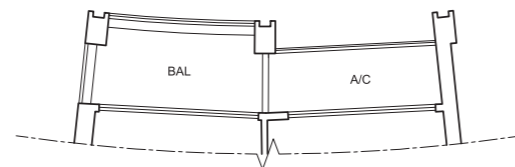
TYPE B2-a
49 sq m / 527 sq ft

#02-10; #06-10; #10-10; #14-10; #19-10;
#23-10; #27-10; #31-10; #35-10

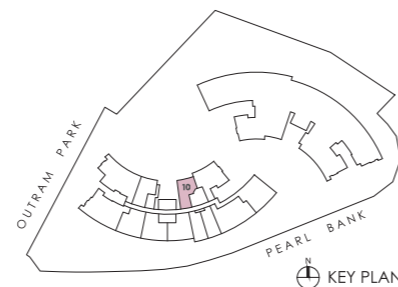


TYPE B2-b
49 sq m / 527 sq ft

#03-10; #04-10; #05-10; #07-10; #08-10;
#09-10; #11-10; #12-10; #13-10; #15-10;
#16-10; #17-10; #20-10; #21-10; #22-10;
#24-10; #25-10; #26-10; #28-10; #29-10;
#30-10; #32-10; #33-10; #34-10; #36-10;
#37-10



All floor areas indicated are inclusive of AC ledge, planters and balcony where applicable. The plans are subject to change as may be approved by the relevant authorities. All floor plans are approximate measurements only and subject to government re-survey. The balcony shall not be enclosed unless with the approved balcony screen. The installation and cost of the balcony screen shall be borne by the purchaser. For an illustration of the approved balcony screen, please refer to the diagram annexed hereto as "Annexure".

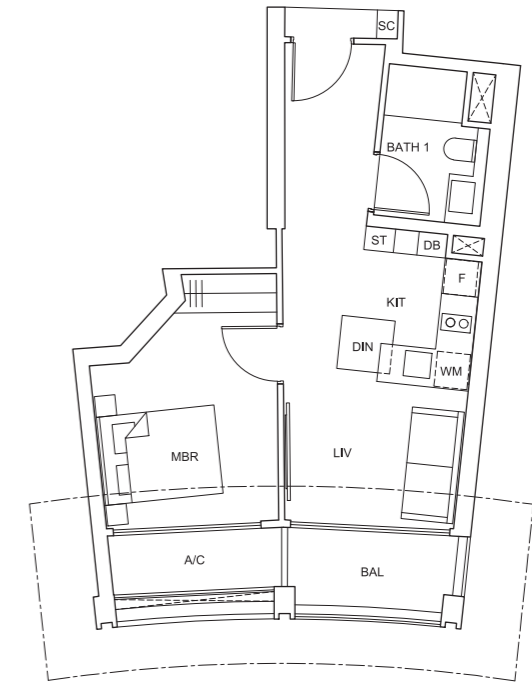


KEY PLAN

1-BEDROOM

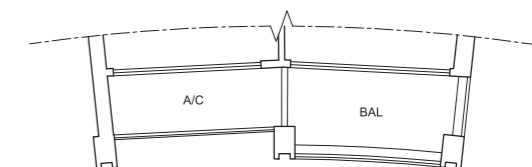
TYPE B3-a
49 sq m / 527 sq ft

#02-21; #06-21; #10-21; #15-21; #19-21;
#23-21; #27-21; #31-21; #35-21

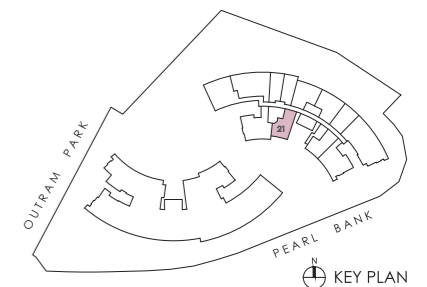


TYPE B3-b
49 sq m / 527 sq ft

#03-21; #04-21; #05-21; #07-21; #08-21;
#09-21; #11-21; #12-21; #13-21; #16-21;
#17-21; #18-21; #20-21; #21-21; #22-21;
#24-21; #25-21; #26-21; #28-21; #29-21;
#30-21; #32-21; #33-21; #34-21; #36-21;
#37-21



All floor areas indicated are inclusive of AC ledge, planters and balcony where applicable. The plans are subject to change as may be approved by the relevant authorities. All floor plans are approximate measurements only and subject to government re-survey. The balcony shall not be enclosed unless with the approved balcony screen. The installation and cost of the balcony screen shall be borne by the purchaser. For an illustration of the approved balcony screen, please refer to the diagram annexed hereto as "Annexure".

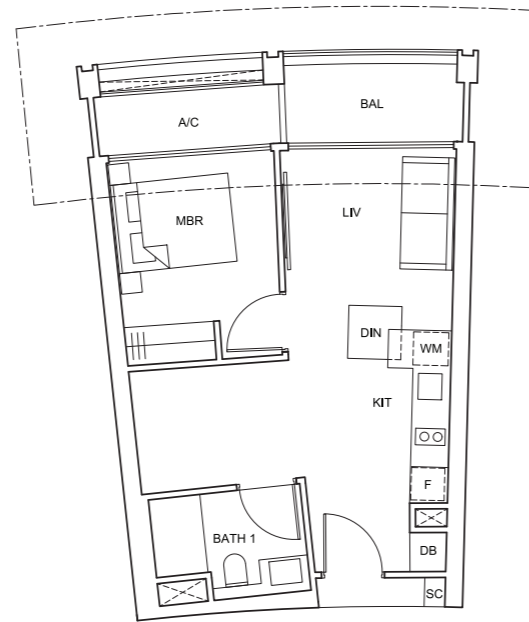


KEY PLAN

1-BEDROOM

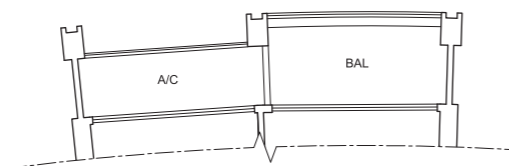
TYPE B4-a
52 sq m / 560 sq ft

#02-17; #06-17; #10-17; #15-17; #19-17;
#23-17; #27-17; #31-17; #35-17

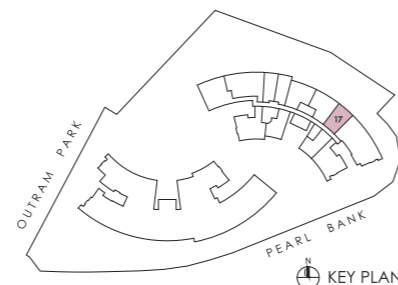


TYPE B4-b
52 sq m / 560 sq ft

#03-17; #04-17; #05-17; #07-17; #08-17;
#09-17; #11-17; #12-17; #13-17; #16-17;
#17-17; #18-17; #20-17; #21-17; #22-17;
#24-17; #25-17; #26-17; #28-17; #29-17;
#30-17; #32-17; #33-17; #34-17; #36-17;
#37-17



All floor areas indicated are inclusive of AC ledge, planters and balcony where applicable. The plans are subject to change as may be approved by the relevant authorities. All floor plans are approximate measurements only and subject to government re-survey. The balcony shall not be enclosed unless with the approved balcony screen. The installation and cost of the balcony screen shall be borne by the purchaser. For an illustration of the approved balcony screen, please refer to the diagram annexed hereto as "Annexure".

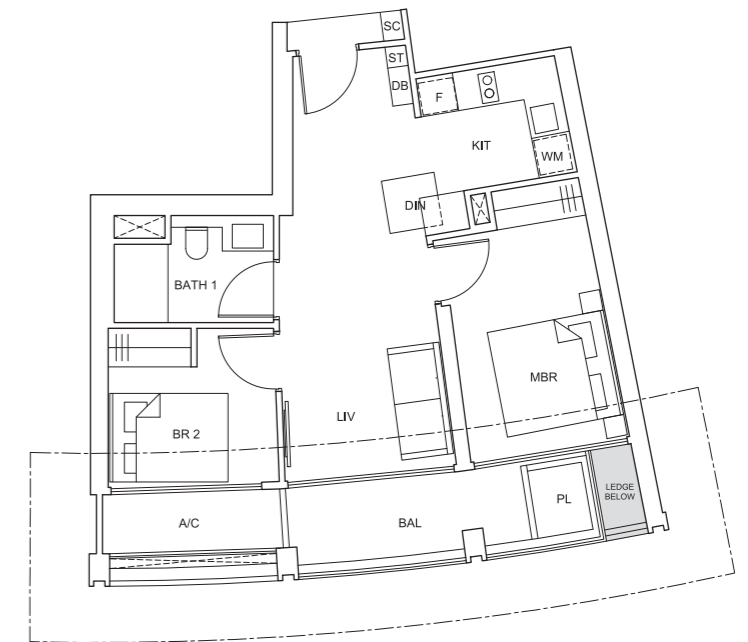


2-BEDROOM

TYPE C1-a
65 sq m / 700 sq ft

#02-04; #06-04; #10-04; #14-04; #19-04;
#23-04; #27-04; #31-04; #35-04;

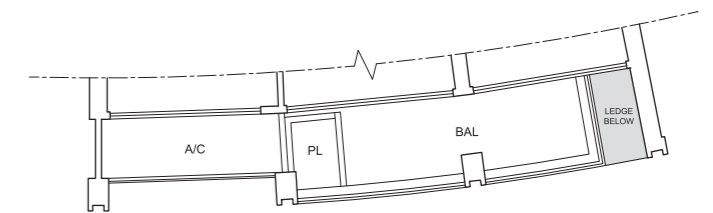
#02-15; #06-15; #10-15; #15-15; #19-15;
#23-15; #27-15; #31-15; #35-15



TYPE C1-b
65 sq m / 700 sq ft

#03-04; #05-04; #07-04; #09-04; #11-04;
#13-04; #15-04; #17-04; #20-04; #22-04;
#24-04; #26-04; #28-04; #30-04; #32-04;
#34-04; #36-04;

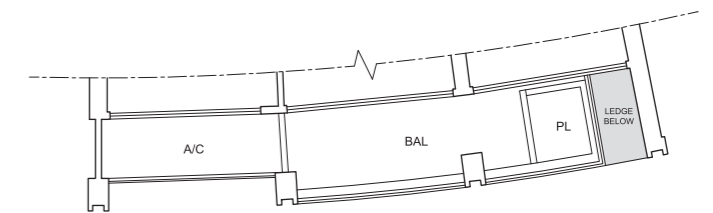
#03-15; #05-15; #07-15; #09-15; #11-15;
#13-15; #16-15; #18-15; #20-15; #22-15;
#24-15; #26-15; #28-15; #30-15; #32-15;
#34-15; #36-15



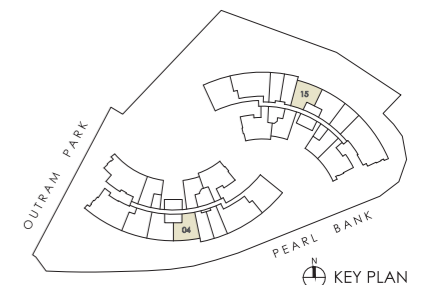
TYPE C1-c
65 sq m / 700 sq ft

#04-04; #08-04; #12-04; #16-04; #21-04;
#25-04; #29-04; #33-04; #37-04;

#04-15; #08-15; #12-15; #17-15; #21-15;
#25-15; #29-15; #33-15; #37-15



All floor areas indicated are inclusive of AC ledge, planters and balcony where applicable. The plans are subject to change as may be approved by the relevant authorities. All floor plans are approximate measurements only and subject to government re-survey. The balcony shall not be enclosed unless with the approved balcony screen. The installation and cost of the balcony screen shall be borne by the purchaser. For an illustration of the approved balcony screen, please refer to the diagram annexed hereto as "Annexure".

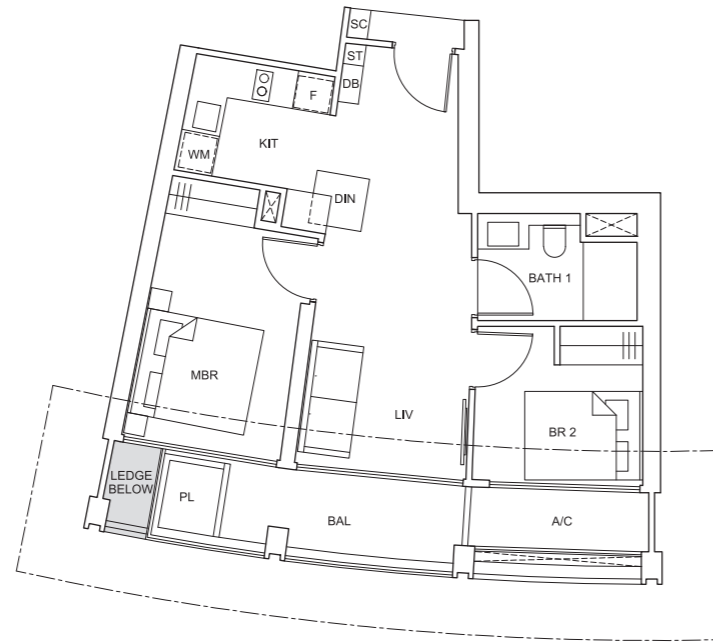


2-BEDROOM

TYPE C1-a (m)
65 sq m / 700 sq ft

#02-05; #06-05; #10-05; #14-05; #19-05;
#23-05; #27-05; #31-05; #35-05;

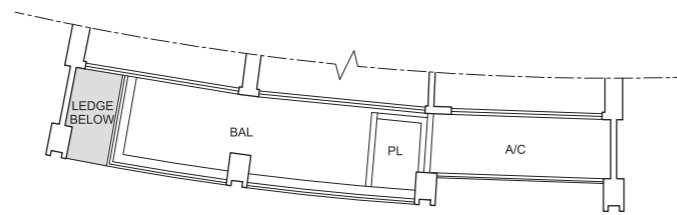
#02-16; #06-16; #10-16; #15-16; #19-16;
#23-16; #27-16; #31-16; #35-16



TYPE C1-b (m)
65 sq m / 700 sq ft

#03-05; #05-05; #07-05; #09-05; #11-05;
#13-05; #15-05; #17-05; #20-05; #22-05;
#24-05; #26-05; #28-05; #30-05; #32-05;
#34-05; #36-05;

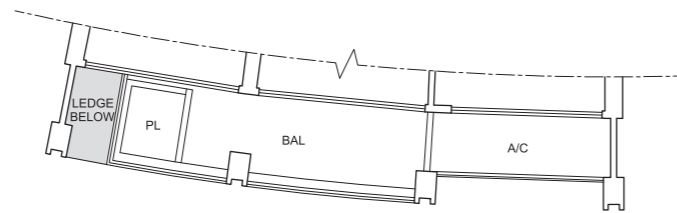
#03-16; #05-16; #07-16; #09-16; #11-16;
#13-16; #16-16; #18-16; #20-16; #22-16;
#24-16; #26-16; #28-16; #30-16; #32-16;
#34-16; #36-16



TYPE C1-c (m)
65 sq m / 700 sq ft

#04-05; #08-05; #12-05; #16-05; #21-05;
#25-05; #29-05; #33-05; #37-05;

#04-16; #08-16; #12-16; #17-16; #21-16;
#25-16; #29-16; #33-16; #37-16



All floor areas indicated are inclusive of AC ledge, planters and balcony where applicable. The plans are subject to change as may be approved by the relevant authorities. All floor plans are approximate measurements only and subject to government re-survey. The balcony shall not be enclosed unless with the approved balcony screen. The installation and cost of the balcony screen shall be borne by the purchaser. For an illustration of the approved balcony screen, please refer to the diagram annexed hereto as "Annexure".



2-BEDROOM

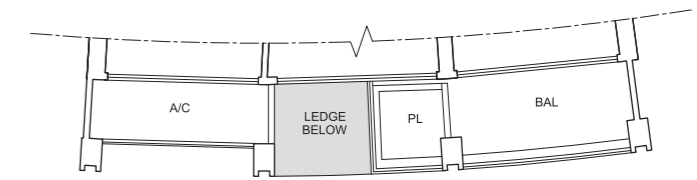
TYPE C2-a
69 sq m / 743 sq ft

#02-06; #06-06; #10-06; #14-06; #19-06;
#23-06; #27-06; #31-06; #35-06



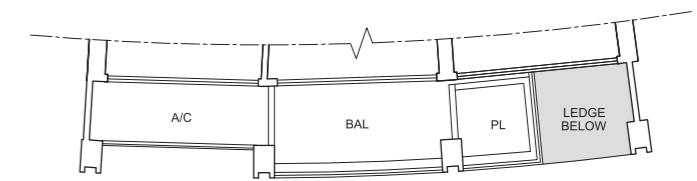
TYPE C2-b
69 sq m / 743 sq ft

#03-06; #05-06; #07-06; #09-06; #11-06;
#13-06; #15-06; #17-06; #20-06; #22-06;
#24-06; #26-06; #28-06; #30-06; #32-06;
#34-06; #36-06

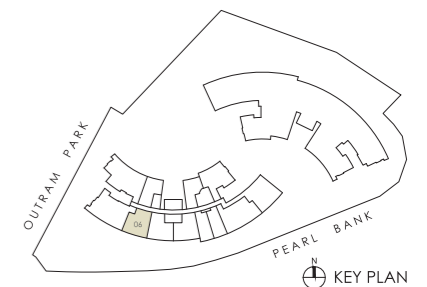


TYPE C2-c
69 sq m / 743 sq ft

#04-06; #08-06; #12-06; #16-06; #21-06;
#25-06; #29-06; #33-06; #37-06



All floor areas indicated are inclusive of AC ledge, planters and balcony where applicable. The plans are subject to change as may be approved by the relevant authorities. All floor plans are approximate measurements only and subject to government re-survey. The balcony shall not be enclosed unless with the approved balcony screen. The installation and cost of the balcony screen shall be borne by the purchaser. For an illustration of the approved balcony screen, please refer to the diagram annexed hereto as "Annexure".

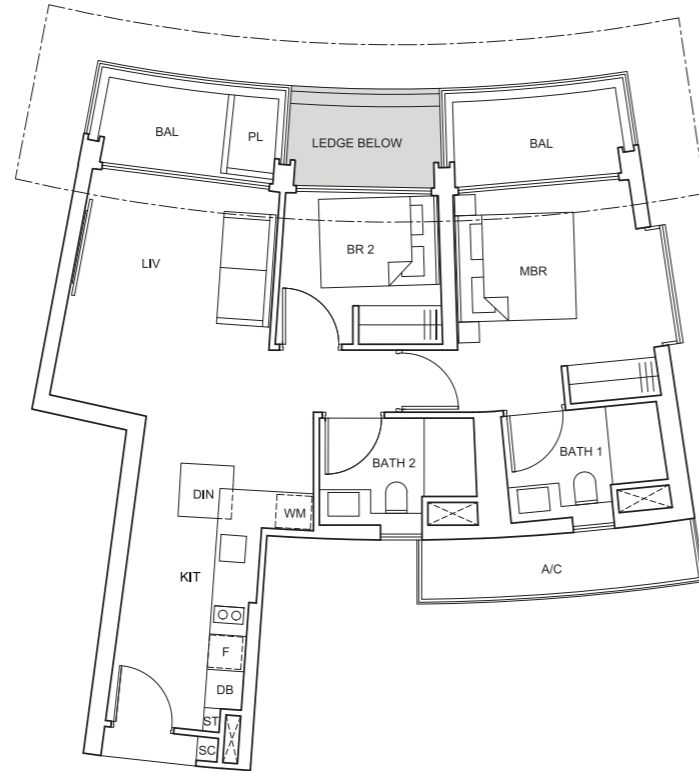


2-BEDROOM

TYPE C3-a 83 sq m / 893 sq ft

#02-11; #06-11; #10-11; #14-11; #19-11;
#23-11; #27-11; #31-11; #35-11;

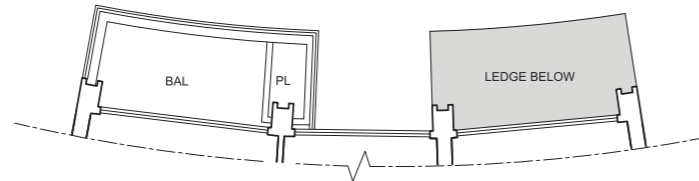
#02-22; #06-22; #10-22; #15-22; #19-22;
#23-22; #27-22; #31-22; #35-22



TYPE C3-b 78 sq m / 840 sq ft

#03-11; #05-11; #07-11; #09-11; #11-11;
#13-11; #15-11; #17-11; #20-11; #22-11;
#24-11; #26-11; #28-11; #30-11; #32-11;
#34-11; #36-11;

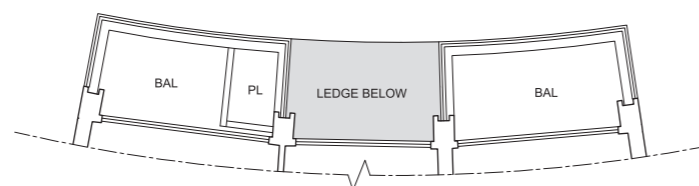
#03-22; #05-22; #07-22; #09-22; #11-22;
#13-22; #16-22; #18-22; #20-22; #22-22;
#24-22; #26-22; #28-22; #30-22; #32-22;
#34-22; #36-22



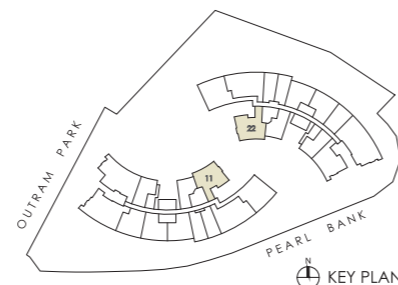
TYPE C3-c 83 sq m / 893 sq ft

#04-11; #08-11; #12-11; #16-11; #21-11;
#25-11; #29-11; #33-11; #37-11;

#04-22; #08-22; #12-22; #17-22; #21-22;
#25-22; #29-22; #33-22; #37-22



All floor areas indicated are inclusive of AC ledge, planters and balcony where applicable. The plans are subject to change as may be approved by the relevant authorities. All floor plans are approximate measurements only and subject to government re-survey. The balcony shall not be enclosed unless with the approved balcony screen. The installation and cost of the balcony screen shall be borne by the purchaser. For an illustration of the approved balcony screen, please refer to the diagram annexed hereto as "Annexure".

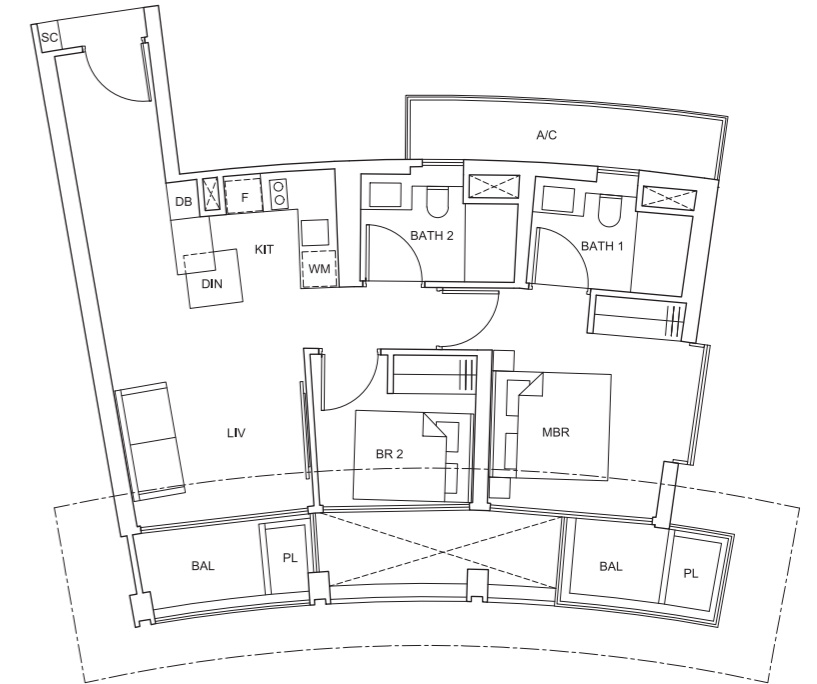


KEY PLAN

2-BEDROOM

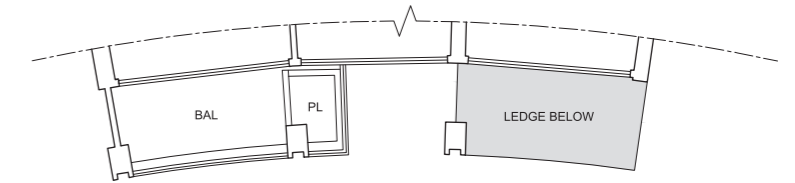
TYPE C4-a 78 sq m / 840 sq ft

#02-19; #06-19; #10-19; #15-19; #19-19;
#23-19; #27-19; #31-19; #35-19



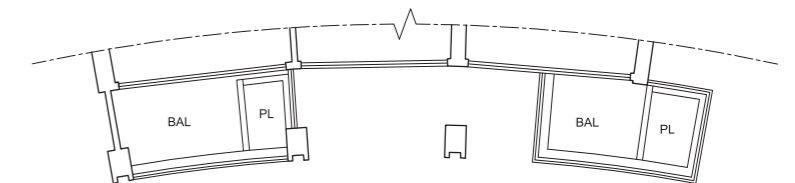
TYPE C4-b 75 sq m / 807 sq ft

#03-19; #05-19; #07-19; #09-19; #11-19;
#13-19; #16-19; #18-19; #20-19; #22-19;
#24-19; #26-19; #28-19; #30-19; #32-19;
#34-19; #36-19

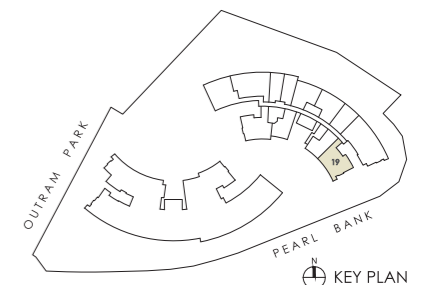


TYPE C4-c 78 sq m / 840 sq ft

#04-19; #08-19; #12-19; #17-19; #21-19;
#25-19; #29-19; #33-19; #37-19



All floor areas indicated are inclusive of AC ledge, planters and balcony where applicable. The plans are subject to change as may be approved by the relevant authorities. All floor plans are approximate measurements only and subject to government re-survey. The balcony shall not be enclosed unless with the approved balcony screen. The installation and cost of the balcony screen shall be borne by the purchaser. For an illustration of the approved balcony screen, please refer to the diagram annexed hereto as "Annexure".



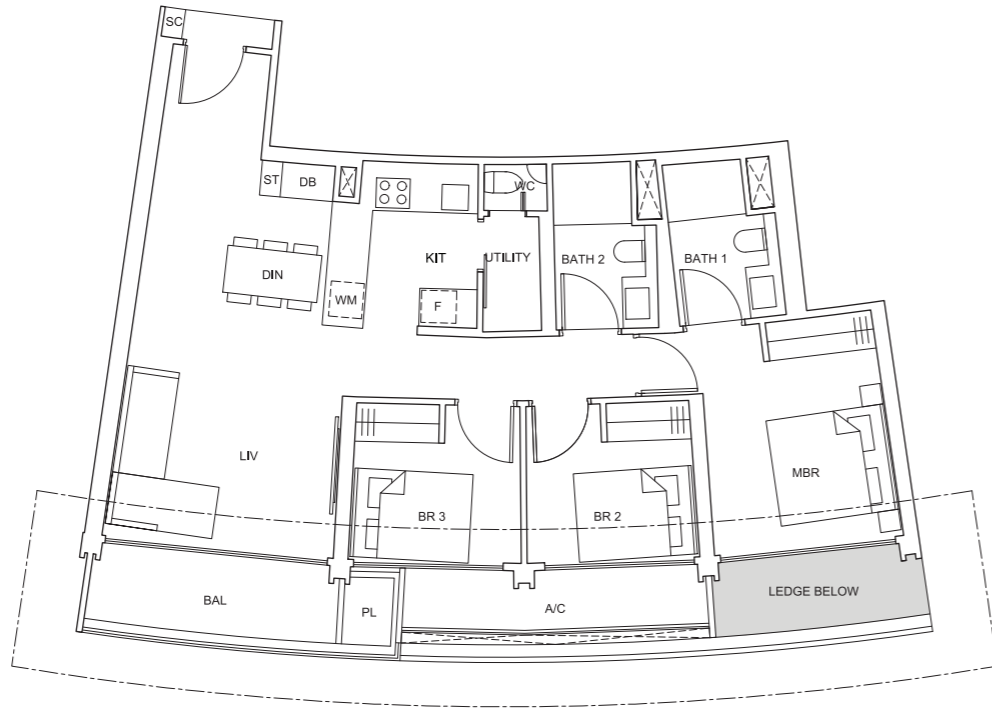
KEY PLAN

3-BEDROOM

TYPE D1-a
102 sq m / 1,098 sq ft

#02-01; #06-01; #10-01; #14-01;
#19-01; #23-01; #27-01; #31-01;
#35-01;

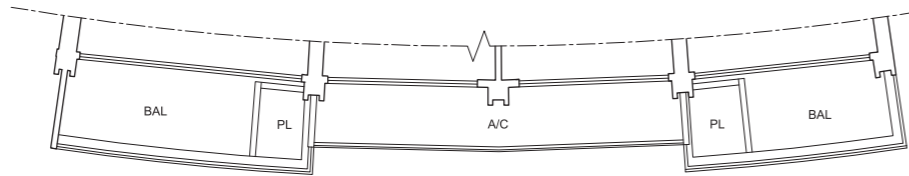
#02-12; #06-12; #10-12; #15-12;
#19-12; #23-12; #27-12; #31-12;
#35-12



TYPE D1-b
107 sq m / 1,152 sq ft

#03-01; #05-01; #07-01; #09-01;
#11-01; #13-01; #15-01; #17-01;
#20-01; #22-01; #24-01; #26-01;
#28-01; #30-01; #32-01; #34-01;
#36-01;

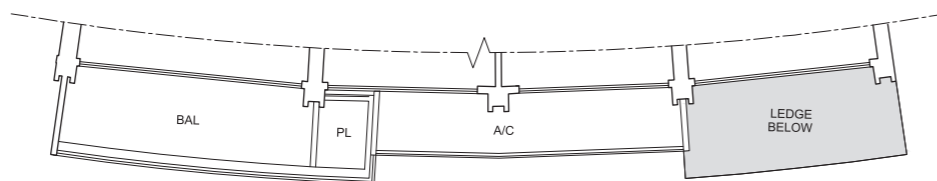
#03-12; #05-12; #07-12; #09-12;
#11-12; #13-12; #16-12; #18-12;
#20-12; #22-12; #24-12; #26-12;
#28-12; #30-12; #32-12; #34-12;
#36-12



TYPE D1-c
102 sq m / 1,098 sq ft

#04-01; #08-01; #12-01; #16-01;
#21-01; #25-01; #29-01; #33-01;
#37-01;

#04-12; #08-12; #12-12; #17-12;
#21-12; #25-12; #29-12; #33-12;
#37-12



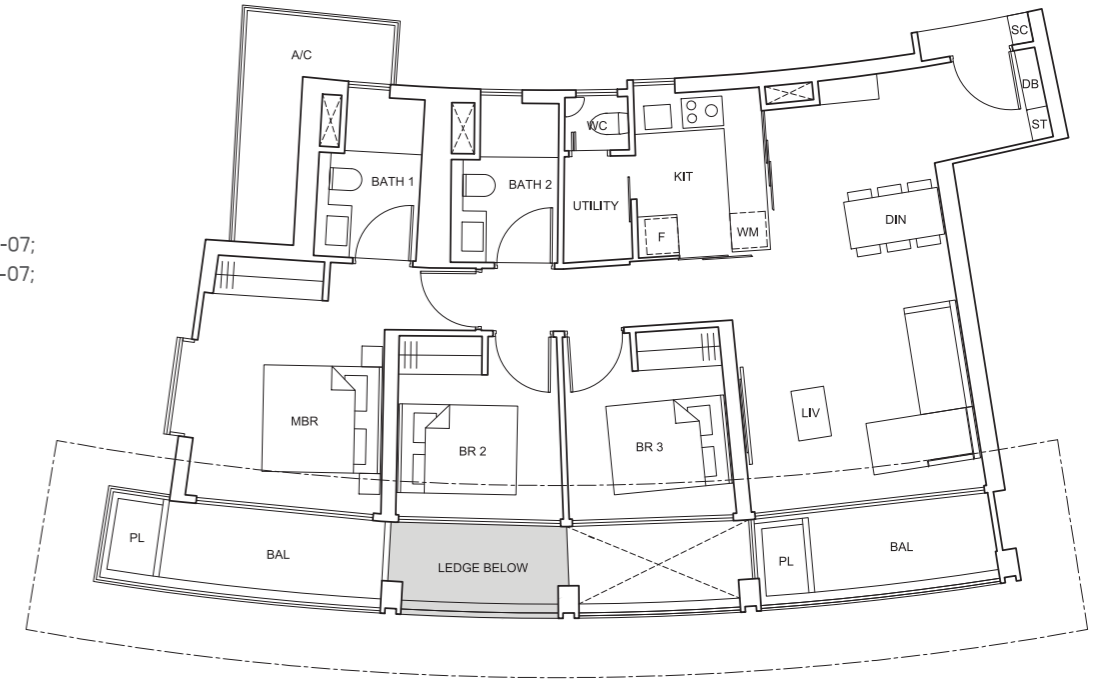
All floor areas indicated are inclusive of AC ledge, planters and balcony where applicable. The plans are subject to change as may be approved by the relevant authorities. All floor plans are approximate measurements only and subject to government re-survey. The balcony shall not be enclosed unless with the approved balcony screen. The installation and cost of the balcony screen shall be borne by the purchaser. For an illustration of the approved balcony screen, please refer to the diagram annexed hereto as "Annexure".



3-BEDROOM

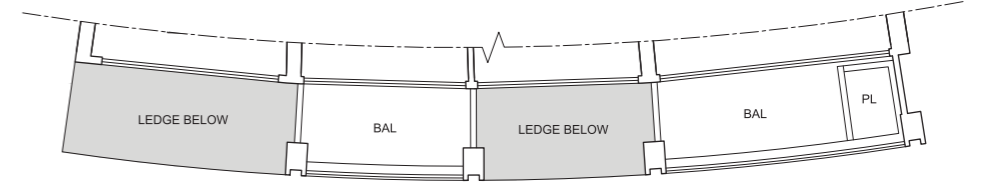
TYPE D2-a
113 sq m / 1,216 sq ft

#02-07; #06-07; #10-07; #14-07;
#19-07; #23-07; #27-07; #31-07;
#35-07



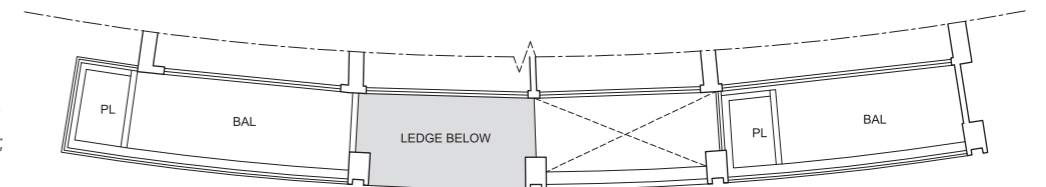
TYPE D2-b
110 sq m / 1,184 sq ft

#03-07; #05-07; #07-07; #09-07;
#11-07; #13-07; #15-07; #17-07;
#20-07; #22-07; #24-07; #26-07;
#28-07; #30-07; #32-07; #34-07;
#36-07

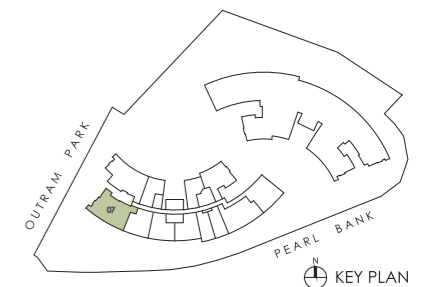


TYPE D2-c
113 sq m / 1,216 sq ft

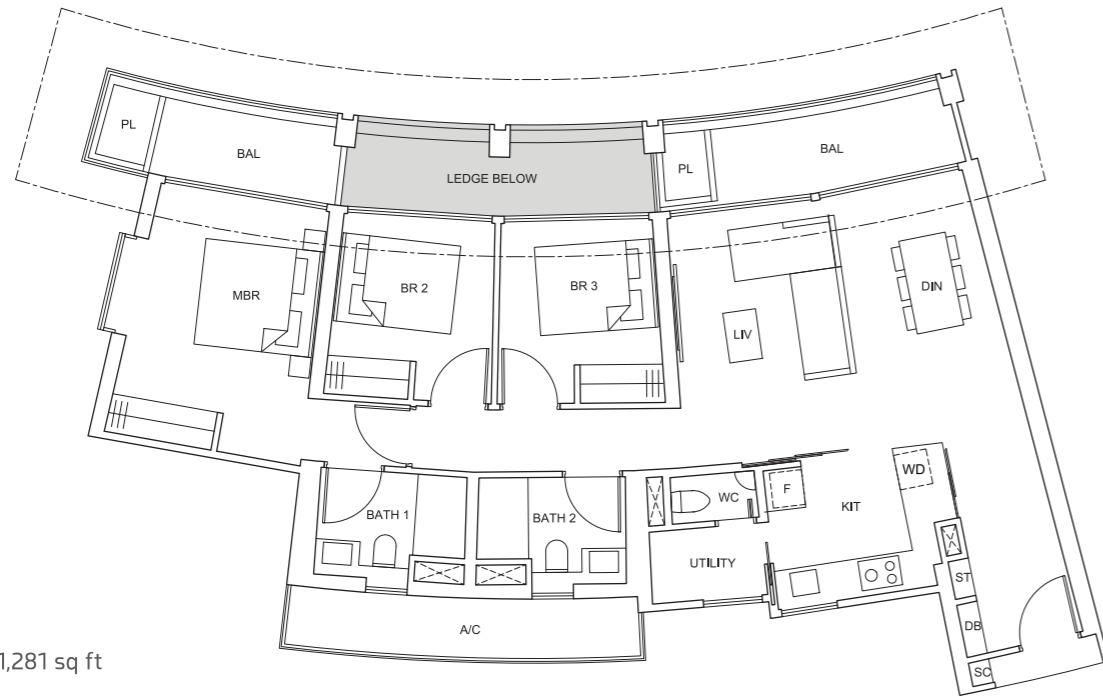
#04-07; #08-07; #12-07; #16-07;
#21-07; #25-07; #29-07; #33-07;
#37-07



All floor areas indicated are inclusive of AC ledge, planters and balcony where applicable. The plans are subject to change as may be approved by the relevant authorities. All floor plans are approximate measurements only and subject to government re-survey. The balcony shall not be enclosed unless with the approved balcony screen. The installation and cost of the balcony screen shall be borne by the purchaser. For an illustration of the approved balcony screen, please refer to the diagram annexed hereto as "Annexure".

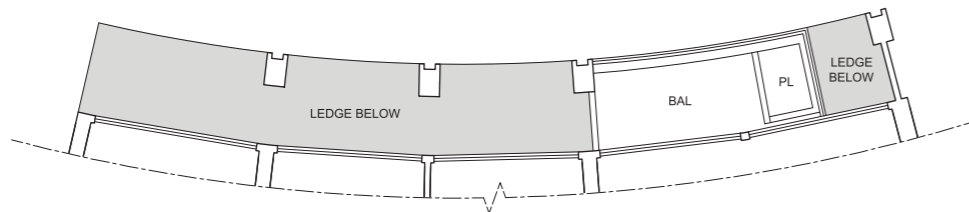


3-BEDROOM



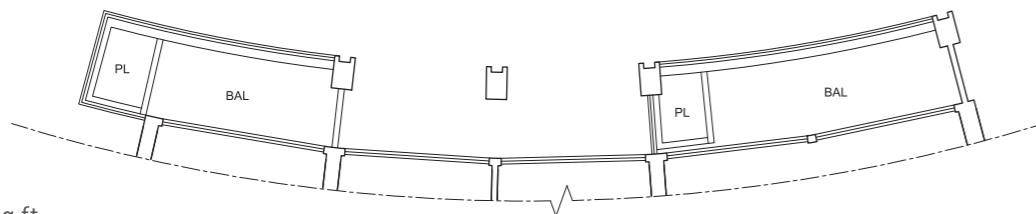
TYPE D3-a
119 sq m / 1,281 sq ft

#02-08; #06-08; #10-08; #14-08; #19-08;
#23-08; #27-08; #31-08; #35-08



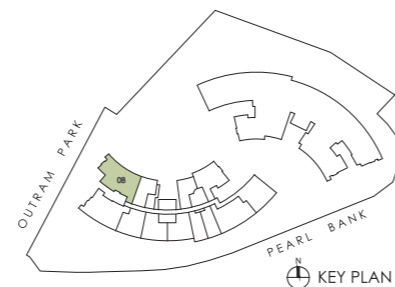
TYPE D3-b
111 sq m / 1,195 sq ft

#03-08; #05-08; #07-08; #09-08; #11-08;
#13-08; #15-08; #17-08; #20-08; #22-08;
#24-08; #26-08; #28-08; #30-08; #32-08;
#34-08; #36-08



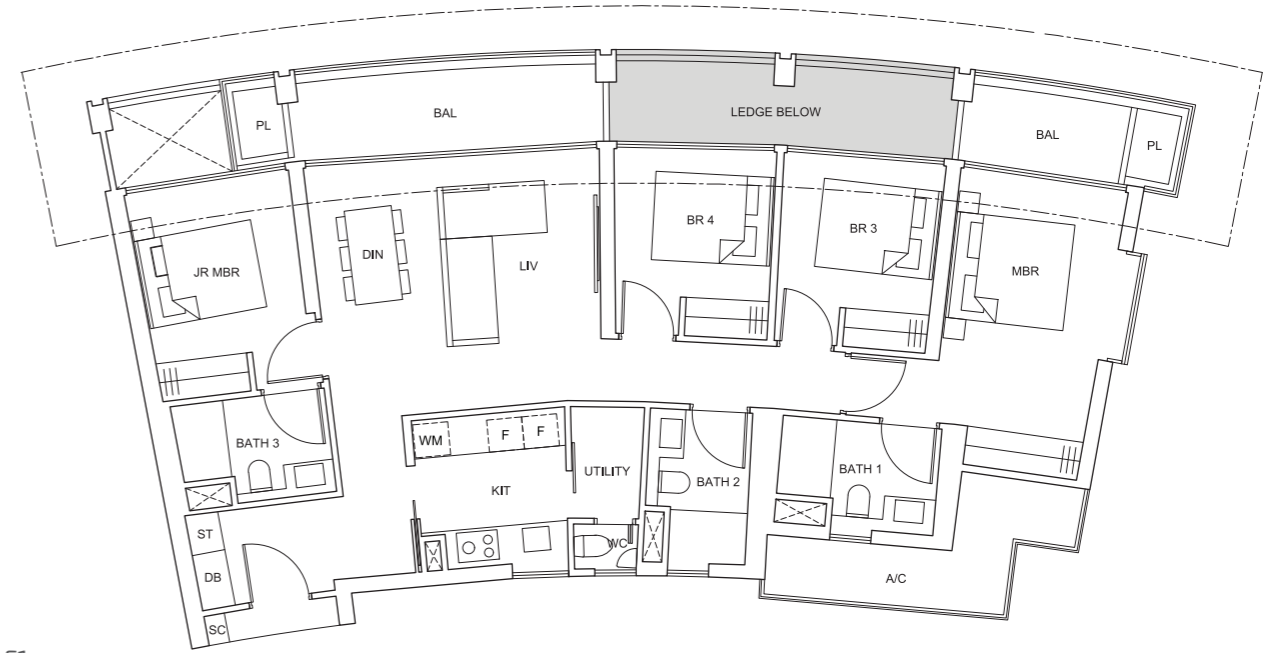
TYPE D3-c
119 sq m / 1,281 sq ft

#04-08; #08-08; #12-08; #16-08; #21-08;
#25-08; #29-08; #33-08; #37-08



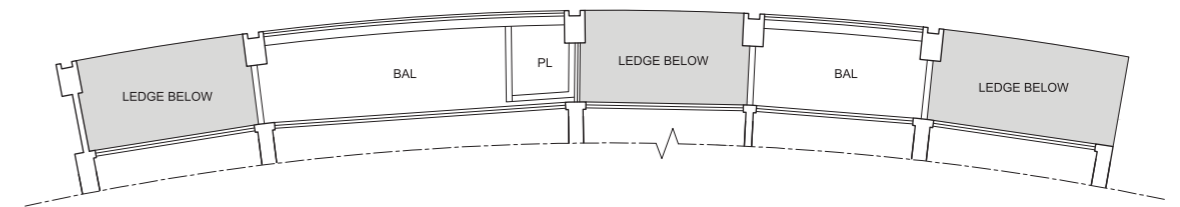
All floor areas indicated are inclusive of AC ledge, planters and balcony where applicable. The plans are subject to change as may be approved by the relevant authorities. All floor plans are approximate measurements only and subject to government re-survey. The balcony shall not be enclosed unless with the approved balcony screen. The installation and cost of the balcony screen shall be borne by the purchaser. For an illustration of the approved balcony screen, please refer to the diagram annexed hereto as "Annexure".

4-BEDROOM



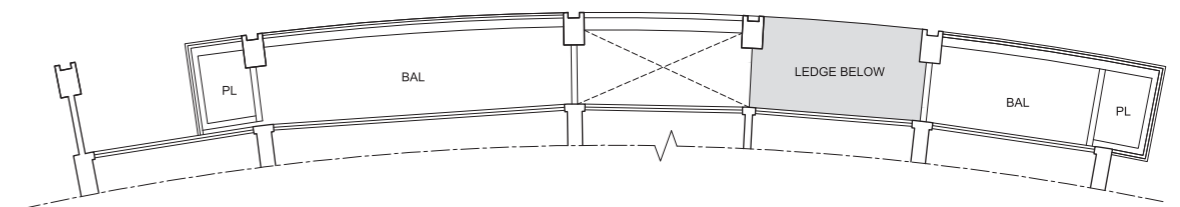
TYPE E1-a
133 sq m / 1,432 sq ft

#02-18; #06-18; #10-18; #15-18; #19-18;
#23-18; #27-18; #31-18; #35-18



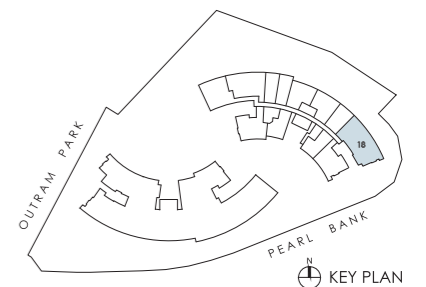
TYPE E1-b
130 sq m / 1,399 sq ft

#03-18; #05-18; #07-18; #09-18; #11-18;
#13-18; #16-18; #18-18; #20-18; #22-18;
#24-18; #26-18; #28-18; #30-18; #32-18;
#34-18; #36-18



TYPE E1-c
133 sq m / 1,432 sq ft

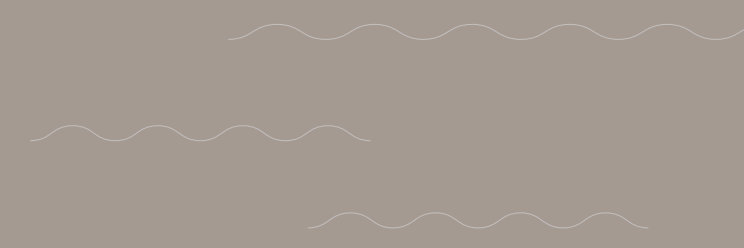
#04-18; #08-18; #12-18; #17-18; #21-18;
#25-18; #29-18; #33-18; #37-18



All floor areas indicated are inclusive of AC ledge, planters and balcony where applicable. The plans are subject to change as may be approved by the relevant authorities. All floor plans are approximate measurements only and subject to government re-survey. The balcony shall not be enclosed unless with the approved balcony screen. The installation and cost of the balcony screen shall be borne by the purchaser. For an illustration of the approved balcony screen, please refer to the diagram annexed hereto as "Annexure".



Artist's Impression

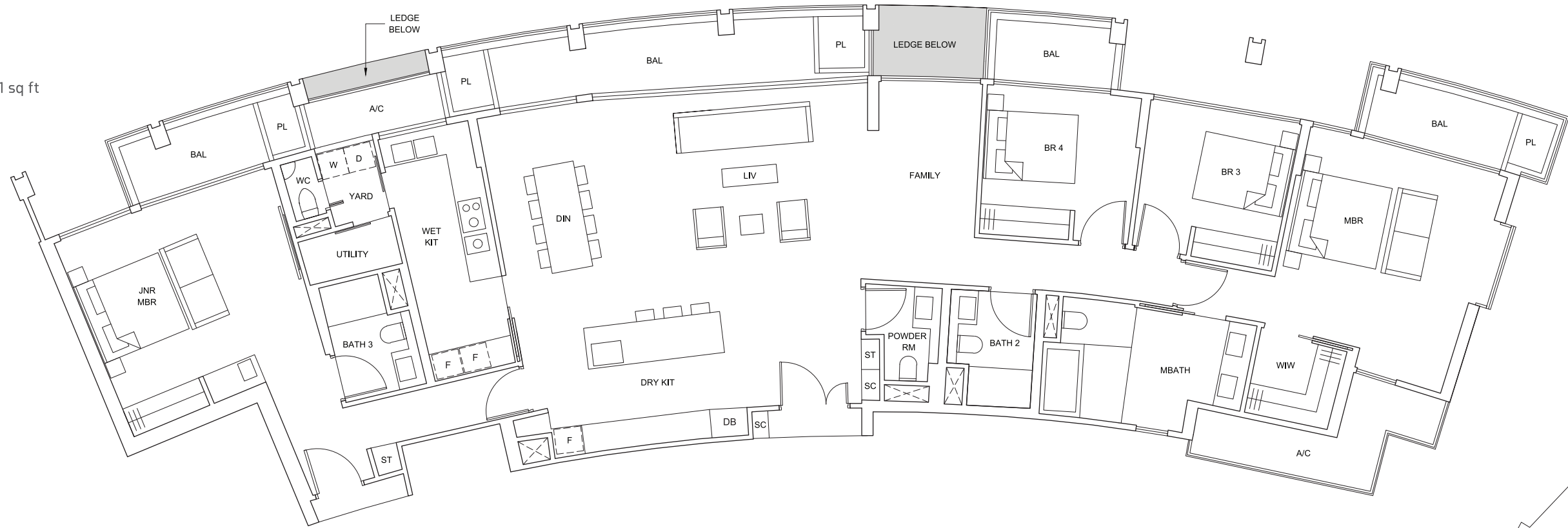


PENTHOUSE PLANS

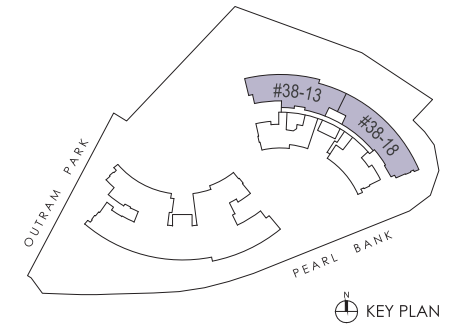
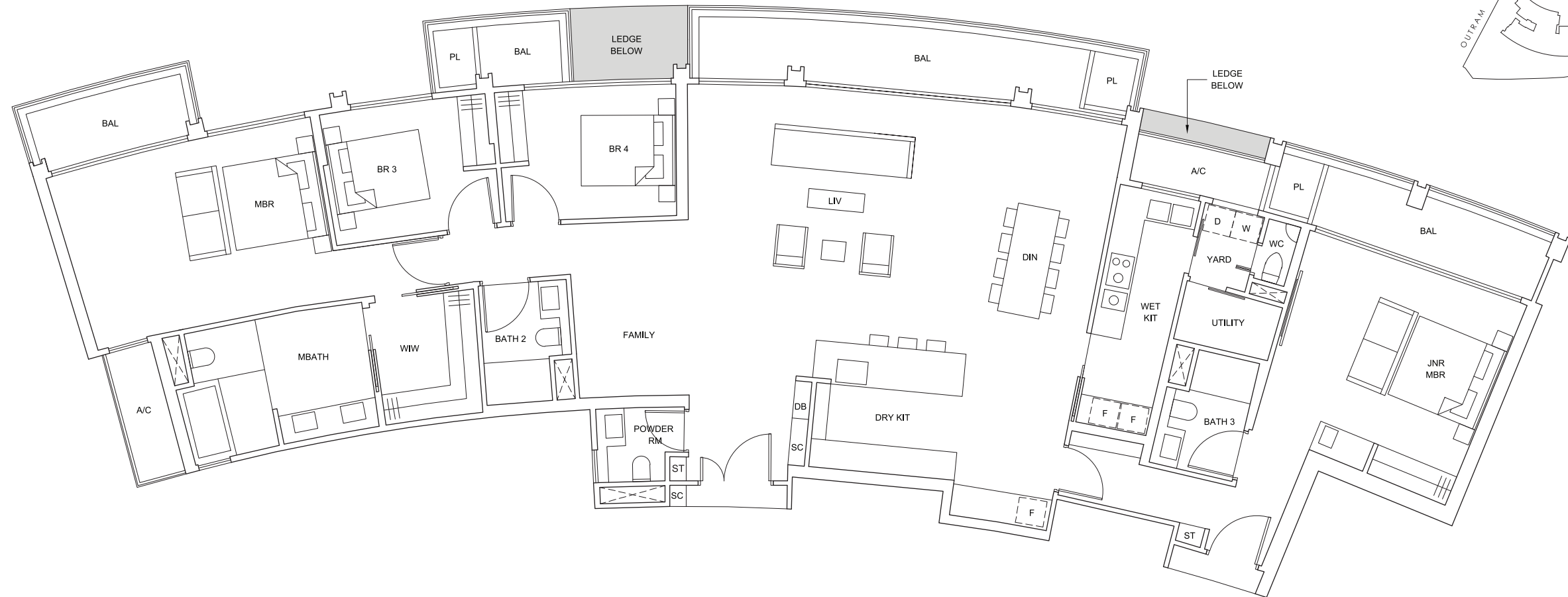


PENTHOUSE

TYPE F1
250 sq m / 2,691 sq ft
#38-18



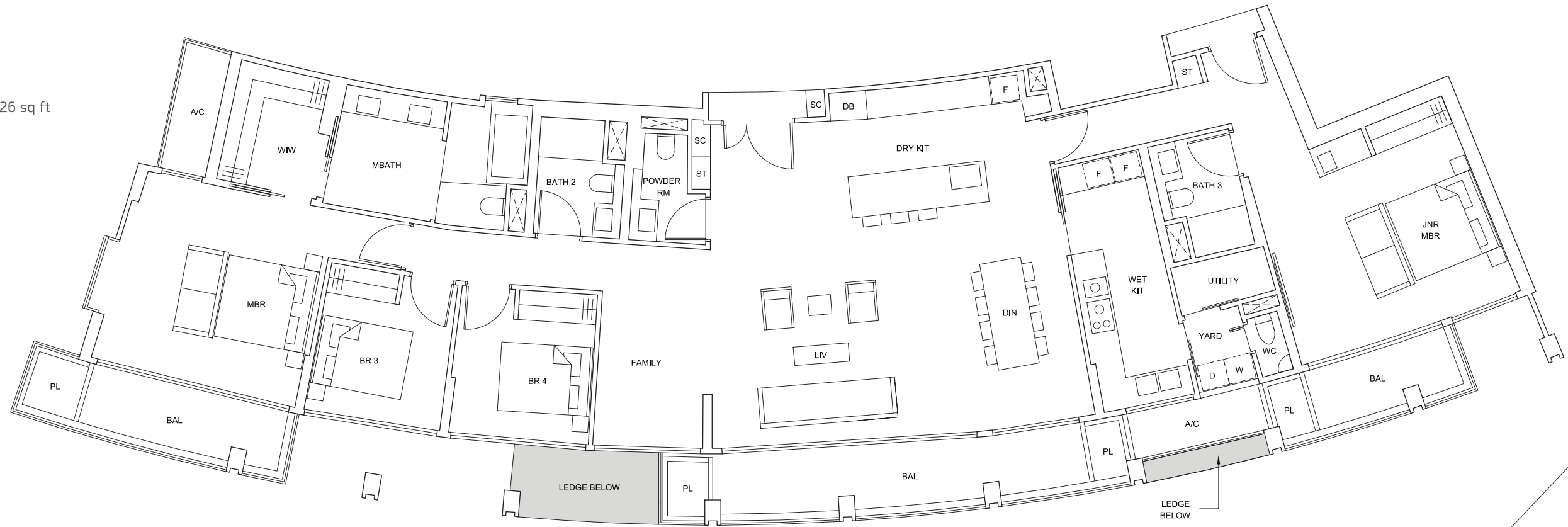
TYPE F2
259 sq m / 2,788 sq ft
#38-13



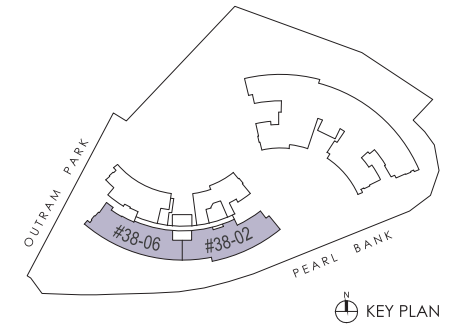
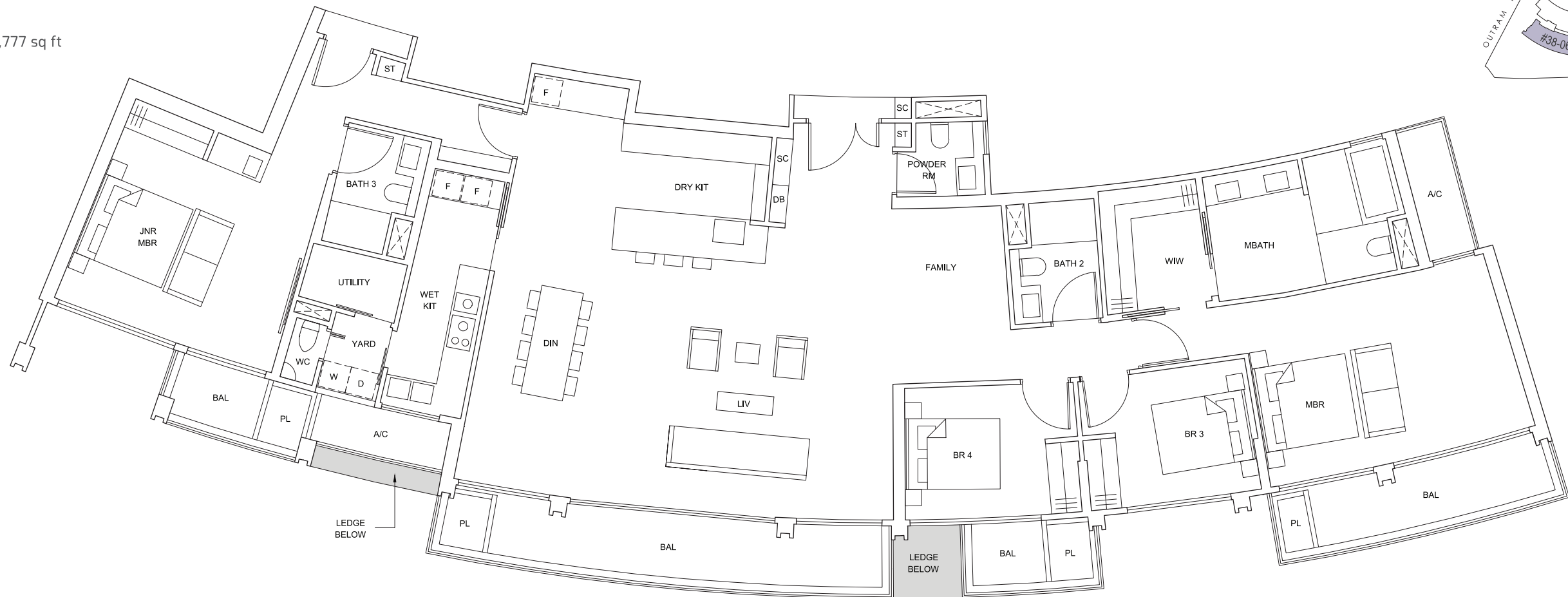
KEY PLAN

PENTHOUSE

TYPE F3
244 sq m / 2,626 sq ft
#38-06

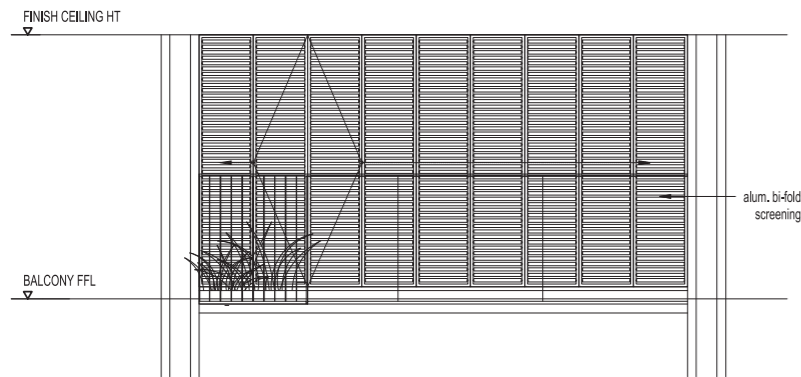


TYPE F4
258 sq m / 2,777 sq ft
#38-02

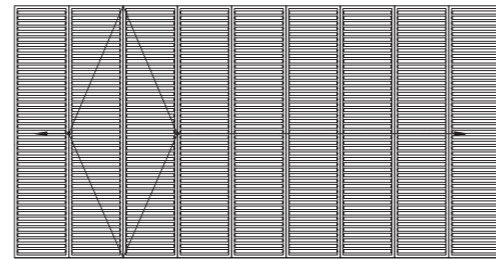


All floor areas indicated are inclusive of AC ledge, planters and balcony where applicable. The plans are subject to change as may be approved by the relevant authorities. All floor plans are approximate measurements only and subject to government re-survey. The balcony shall not be enclosed unless with the approved balcony screen. The installation and cost of the balcony screen shall be borne by the purchaser. For an illustration of the approved balcony screen, please refer to the diagram annexed hereto as "Annexure".

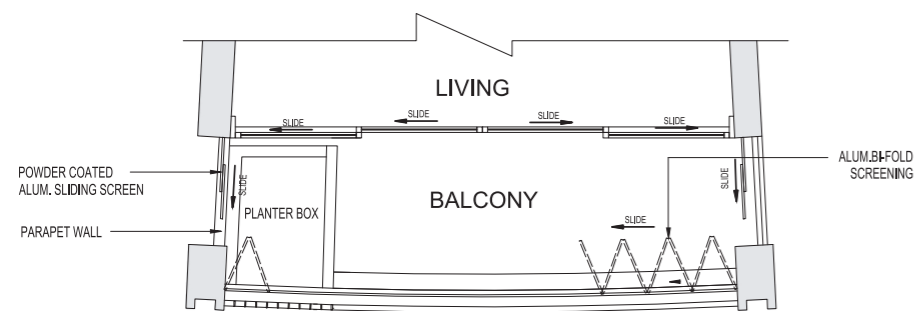
APPROVED BALCONY SCREEN ANNEXURE



TYPICAL ELEVATION OF
BALCONY WITH SCREEN

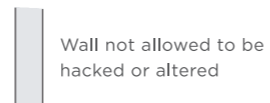


TYPICAL ELEVATION -
BALCONY SCREEN



TYPICAL PLAN WITH
BALCONY SCREEN

LEGEND :



- Note:
1. The balcony shall not be enclosed unless with the approved balcony screen.
 2. The proposed balcony screens allow for natural ventilation within the balcony at all times.
 3. The installation and cost of the screen shall be borne by the Purchaser.

For Enquiries

+65 6904 8484

[weareonepearlbank](#)

[onepearlbank](#)

[Onepearlbank.com.sg](#)

DEVELOPER: ARECA INVESTMENT PTE. LTD. (199500924C) • DEVELOPER'S LICENCE NO.: C1313 • LOCATION: LOT(S) 00189L, TS 22, AT PEARL BANK / OUTRAM ROAD • TENURE: 99 YEARS WEF 1 MARCH 2019 • ENCUMBRANCES ON THE LAND: MORTGAGE IN FAVOUR OF DBS BANK LTD. (IN ITS CAPACITY AS SECURITY AGENT) • EXPECTED DATE OF VACANT POSSESSION: 31 DEC 2024 • EXPECTED DATE OF LEGAL COMPLETION: 31 DEC 2027

We have used reasonable care in preparing this brochure and neither our agents nor we will be held responsible for any inaccuracies in the contents of this brochure. Whilst we believe the contents of this brochure to be correct and accurate at the time of going to print, they are not to be regarded as statements or representations of facts. All information, specifications and plans herein contained may be subjected to change from time to time by us and/or the competent authorities as may be required and do not form part of an offer or contract. Renderings, depictions and illustrations are artistic impressions. Photographs do not necessarily represent as-built standard specifications. Floor areas are approximate measurements and are subject to final survey.



CapitaLand Limited (CapitaLand) is one of Asia's largest diversified real estate groups. Headquartered and listed in Singapore, it owns and manages a global portfolio worth about S\$138.7 billion as at 30 June 2021. CapitaLand's portfolio spans across diversified real estate classes which includes commercial, retail; business park, industrial and logistics; integrated development, urban development; as well as lodging and residential. With a presence across more than 250 cities in over 30 countries, the Group focuses on Singapore and China as its core markets, while it continues to expand in markets such as India, Vietnam, Australia, Europe and the USA.

CapitaLand has one of the largest real estate investment management businesses globally. It manages six listed real estate investment trusts (REITs) and business trusts as well as over 20 private funds. CapitaLand launched Singapore's first REIT in 2002 and today, its stable of REITs and business trusts comprises CapitaLand Integrated Commercial Trust, Ascendas Real Estate Investment Trust, Ascott Residence Trust, CapitaLand China Trust, Ascendas India Trust and CapitaLand Malaysia Mall Trust.

CapitaLand places sustainability at the core of what it does. As a responsible real estate company, CapitaLand contributes to the environmental and social well-being of the communities where it operates, as it delivers long-term economic value to its stakeholders.

